

BRICKMAN 1200K

BRICKMAN

BRICKMAN 900K IS DEVELOPED TO MAKE THE TASK OF COMPACTING EXTRA LARGE QUANTITIES OF BULKY WASTE, SUCH AS CARDBOARD AND PET BOTTLES AS SIMPLE AS POSSIBLE.

The automated solution is time-saving and convenient and Brickman 1200K has the capacity to process up to 1100 kg material per hour!



Automatic solution



1100 KG/H

CAPACITY
CARDBOARD

Orwak benefits

MORE PRODUCTIVE USE OF TIME

Less time spent on waste handling, more time for your core activities!

MORE SPACE & ORDER

Our balers rapidly minimizes the space the waste takes up, keeping aisles free and tidy.

LESS COSTS, MORE VALUE

More compaction = less waste volume to transport. Fewer transports required results in lower transportation costs and reduced CO₂ emissions. Sorting at source yields a higher quality of waste material for recycling.

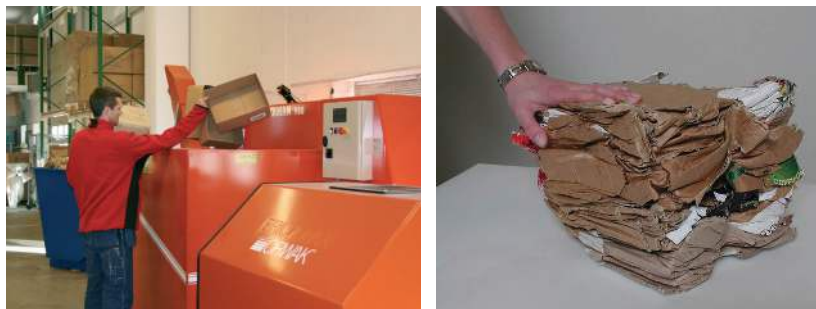


Why Brickman?

- + Convenient fully automated compaction solution
- + Impressive volume reduction of up to 20:1
- + Placement opportunities indoors



BRICKMAN 1200K



BRICKMAN 1200K IS OPTIMIZED FOR:

CARDBOARD

+ Corrugated cardboard

CAPACITY

up to 1100 kg/h

PLASTIC

+ PET bottles

CAPACITY

up to 900 kg/h

DESIGNED FOR HEAVY DUTY

Thanks to the following features, the robust briquette press Brickman 1200K is especially designed for compaction of large volumes of cardboard and empty PET bottles:

- + Extension on press cylinder
- + Automatic greasing of the press plate
- + Reinforced material in press chamber, press plate, cutting blades, guide piston and press loop

OPTIONAL ACCESSORIES

Brickman 1200K can be ordered with a number of accessories; different chute options, start systems, sound absorption plates as well as heating and cooling devices.

CONVENIENT AND EFFICIENT

Brickman offers time-saving and comfortable waste handling. The press can be fed while running, there is no lid or door to open when loading the material and the ready briquettes require no binding. Furthermore, optional photocells can automatize the start function. The material infeed and briquette outfeed are easy to integrate in system solutions.

GREAT LOGISTICS

Thanks to Brickman's compact dimensions and low sound emission, it can be placed indoors close to the waste disposal station.

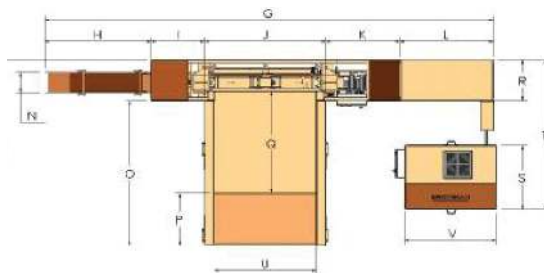
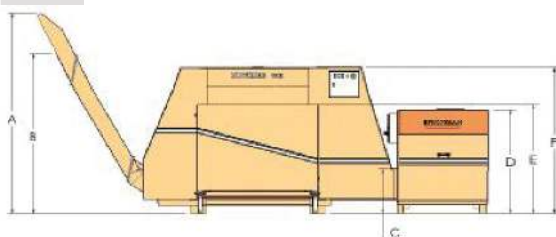
DIMENSIONS & SPECIFICATIONS

DIMENSIONS (MM)

A	B	C	D	E	F	G	H	I	J	K	L	M	N	O	P	Q	R
2470	2010	585	1350	1420	1870	5710	1355	685	1545	945	1180	2430	265	1900	690	1350	535

DIMENSIONS (MM)

S	T	U	V
840	1960	1300	1155



TECHNICAL SPECIFICATIONS

MACHINE WEIGHT	PRESS FORCE	PRESSURE	HOPPER	BRIQUETTE SIZE	DENSITY	NOISE LEVEL	OPERATING POWER
1600 kg	25 ton, 250 kN	Up to 62 kg/cm ²	2 m ²	200x200x100-300 mm	Up to 400kg/m ²	68 db (A)	400 V, 3-phase, 50 Hz** Fuse: 25 A (slow) Engine: 7.5 kW Voltage: 24 V Protec. class: IP 55

We reserve the right to make changes to specifications without prior notice. * Density varies with type of material. ** Other voltages are available